



# Product Data Sheet

Bumper Mount Antenna

# TETRA UHF

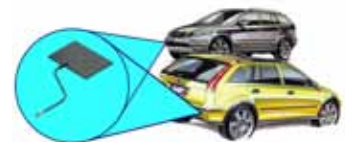
## Bumper Mount Antenna

### BMP1

- Covert application
- Robust
- Flexible construction

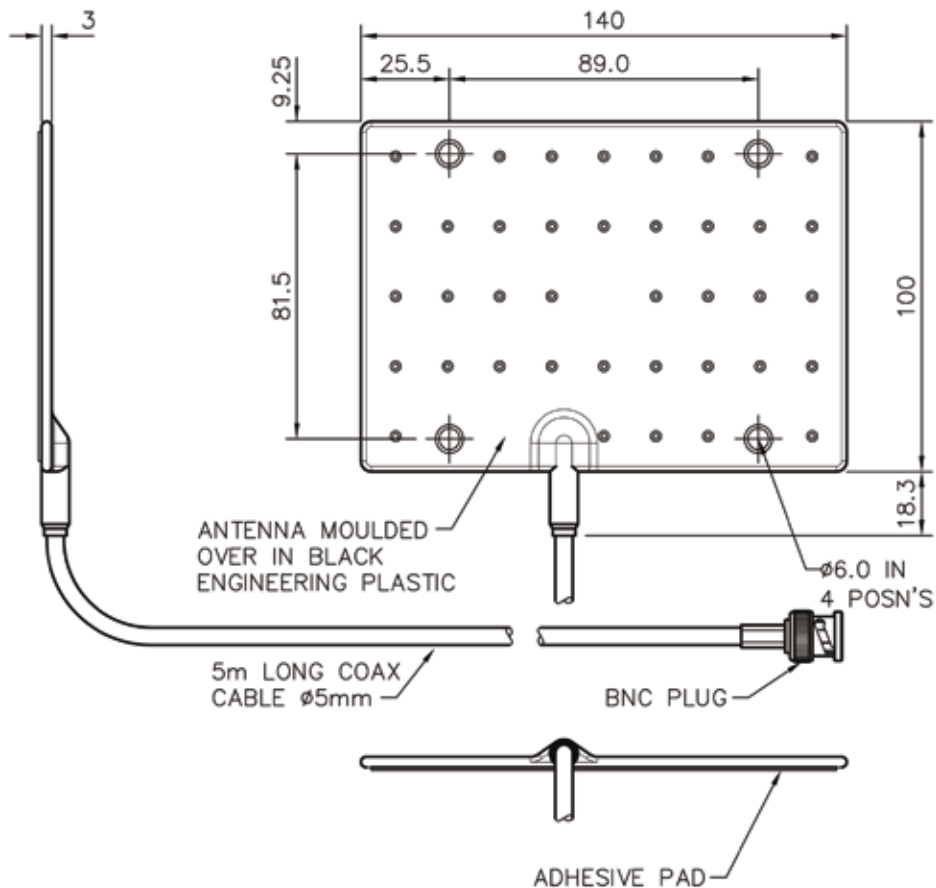
The Panorama Bumper Mount Antenna is designed for covert operations and other applications which require a vehicle antenna that is effectively invisible.

Mounted in the vehicle's bumper, installation requires no drilling and is invisible from the outside of the car.



Antenna positioning

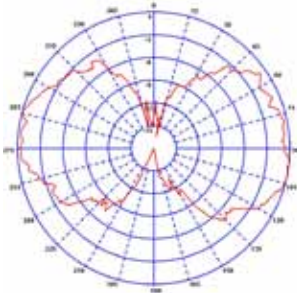
#### Technical Drawing



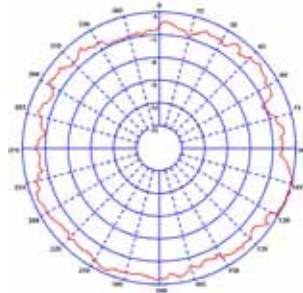
# TETRA UHF

## Bumper Mount Antenna

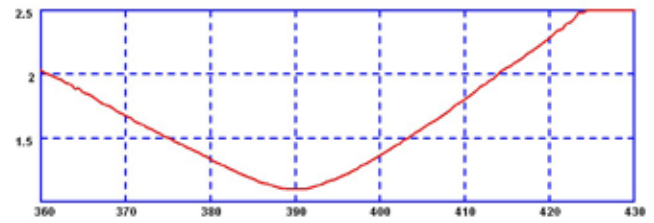
E-Plane (390MHz)



H-Plane (390MHz)



Typical VSWR



Part No.	BMP1-S1-5B	BMP1-S2-5B	BMP1-U-5B
<b>Electrical Data</b>			
Frequency Range (MHz)	380-400	410-430	430-472
Operational Band	S1	S2	U
Gain: Isotropic	2dBi	2dBi	2dBi
Compared to ¼ wave	0dB	0dB	0dB
Bandwidth @ 1.5:1 VSWR	10%	10%	10%
Polarisation	Vertical	Vertical	Vertical
Pattern	Omni-directional	Omni-directional	Omni-directional
Impedance	50Ω	50Ω	50Ω
Max Input Power (W)	25	25	25
<b>Mechanical Data</b>			
Dimensions (mm)	Length	140	140
	Width	100	100
	Thickness	4 (including adhesive pad)	4 (including adhesive pad)
Operating Temp (°C)	-40° / +80°C	-40° / +80°C	-40° / +80°C
Material	Engineering plastic	Engineering plastic	Engineering plastic
Colour	Black	Black	Black
<b>Mounting Data</b>			
Fixing	Adhesive pad & 4 × fixing moles	Adhesive pad & 4 × fixing moles	Adhesive pad & 4 × fixing moles
<b>Cable Data</b>			
Type	URM 76	URM 76	URM 76
Thickness (mm)	5	5	5
Length (m)	5	5	5
Termination	BNC Plug	BNC Plug	BNC Plug

**Panorama Antennas Ltd**  
Frogmore, London, SW18 1HF, United Kingdom

T: +44 (0)20 8877 4444  
F: +44 (0)20 8877 4477

E: [sales@panorama-antennas.com](mailto:sales@panorama-antennas.com)  
[www.panorama-antennas.com](http://www.panorama-antennas.com)

**PANORAMA  ANTENNAS**