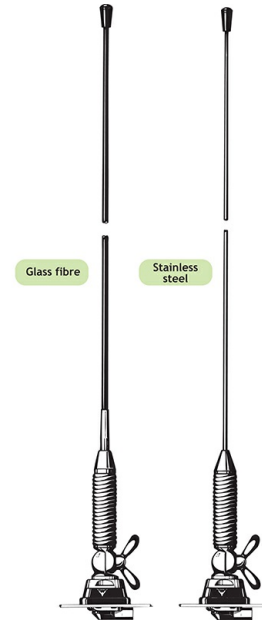


1/4 λ Mobile Antenna with Shock Spring for the 160 MHz Band

DESCRIPTION

- > Sturdy, general-purpose 1/4 λ antenna in professional quality.
- > Available with glass fiber or stainless steel whip.
- > Stainless steel Z-mount with ball-joint and wing screw whip-fastening system.
- > Available with bright or black-chromed metal parts (mount and whip):
 - > MH 2-Z...: Bright version
 - > MH 2-BZ...: Black version
- > Simple mounting exclusively with access from the outside.
Models with roof thickness from 2 mm to 7.5 mm mounting from the inside.
- > Choice between two connection principles:
 - > Z-mount: FME-connection (supplied without cable).
 - > ZP4-mount: Permanently attached 4 m cable terminated with FME-connector.



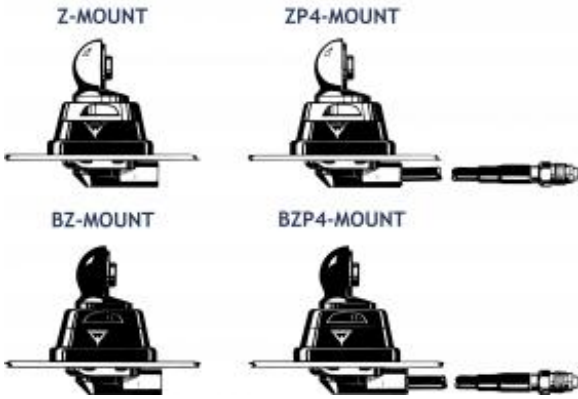
ORDERING

| Type | Product No. | Description | Frequency |
|------------|-------------|----------------------|---|
| MH 2-ZP4 | 130000729 | Glassfibre Whip | ZP4-mount with 4 m cable and FME-connector BRIGHT |
| MH 2-BZP4 | 130000742 | Glassfibre Whip | BZP4-mount with 4 m cable and FME-connector BLACK |
| MH 2-ZP4R | 130000730 | Stainless Steel Whip | ZP4-mount with 4 m cable and FME-connector BRIGHT |
| MH 2-BZP4R | 130000731 | Stainless Steel Whip | BZP4-mount with 4 m cable and FME-connector BLACK |
| MH 2-Z | 130000727 | Glassfibre Whip | Z-mount with FME-system BRIGHT |
| MH 2-BZ | 130000733 | Glassfibre Whip | BZ-mount with FME-system BLACK |
| MH 2-ZR | 130000740 | Stainless Steel Whip | Z-mount with FME-system BRIGHT |
| MH 2-BZR | 130000741 | Stainless Steel Whip | BZ-mount with FME-system BLACK |

SPECIFICATIONS

| Electrical | |
|--------------------------|---|
| Model | MH 2-Z |
| Frequency | Tunable by cutting within: 144-175 MHz (Also applicable: 175-225 MHz) |
| Antenna Type | Mobile whip antenna |
| Polarisation | Vertical |
| Impedance | 50 Ω |
| Maximum Input Power | 150 W |
| Gain (EIA RS-329-1) | 0 dB |
| Mechanical | |
| Materials | Whip: Conical glass fiber or stainless steel Chromed brass Spring: Stainless steel Mount: Chromed brass Weather- and shockproof plastics Stainless steel |
| Installation Torque | 7.5 +/- 1 Nm |
| Colour | Bright or black, see above |
| Height | 550 mm / 21.65 in. |
| Weight | Z-version: Approx. 230 g ZP4-version: Approx. 380 g |
| Mounting | 21mm dia. hole (For roof thicknesses 2 mm up to 7.5 mm mounting hole should be 22mm dia.) |
| Mounting Plate Thickness | Max. 2.0 mm (Models up to 7.5 mm on request) |

ADDITIONAL DATA



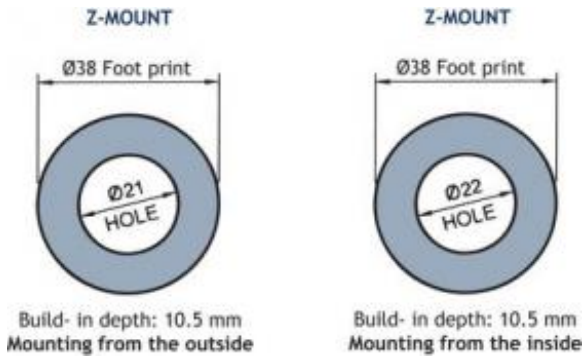
INSTALLATION

This antenna is supplied with type Z-mount. The whip is fastened to the mount by means of our standard ball-joint and wing screw system. The adjustable ball-joint ensures that the whip can always be mounted in a vertical position independent of the angle of the installation spot.

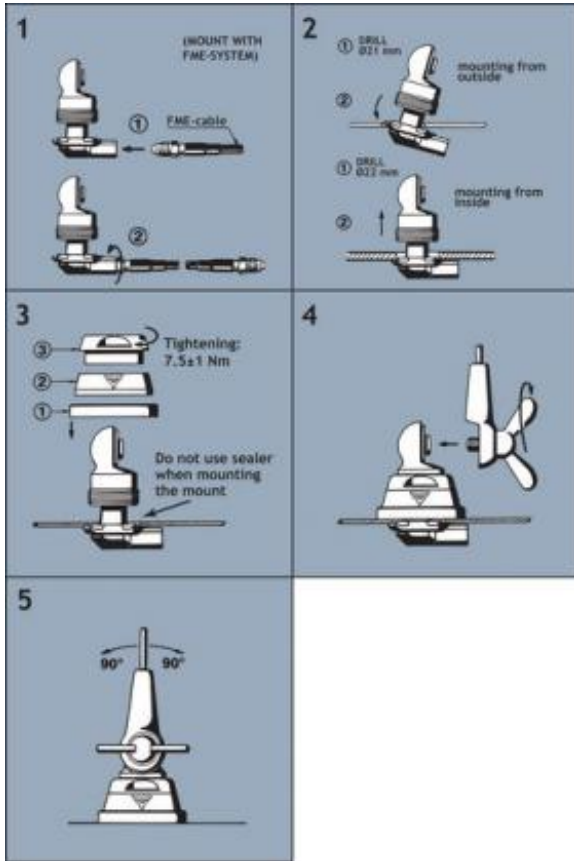
The Z-mount is particularly well suited for mounting on car-roofs because of its ability to be installed exclusively with access from the outside. The Z-Mount for roof thickness from 2 mm to 7.5 mm must be mounted from the inside.

However, the antenna can be installed anywhere on the car, as the Z-mount is equally well suited for mounting on e.g. trunk or wing.

1. INSTALLATION DIMENSIONS



2. INSTALLATION STEPS

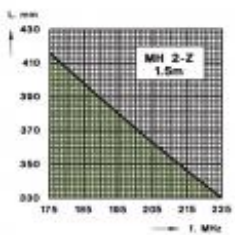
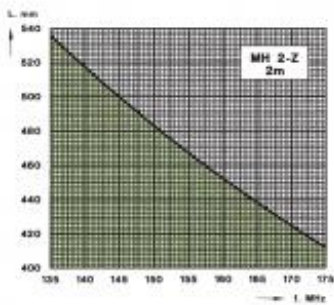


Do not use sealer on rubber gasket or other places.

3. TUNING

The antenna should always be tuned using an SWR-meter.
The cutting diagrams below serve as a guide for this procedure.

GLASS FIBRE WHIP



STAINLESS STEEL WHIP

